

SHRINKING THE QUARTZ CRYSTAL RESONATOR

Chris Watts, Chief Engineer, Golledge Electronics

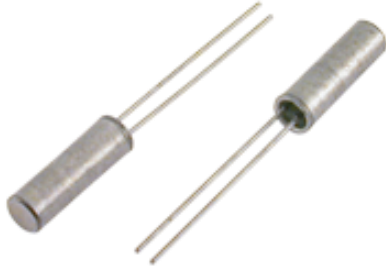

Introduction

As with the rest of electronics there has been a move from leaded packages to surface mount and ever smaller packages. While the consequences for this change have been slight for other passive components, crystals do need some design adaptations as the size of the chosen crystal is reduced. The effects of reduced crystal size are described and recommendations for mitigating these effects are discussed.

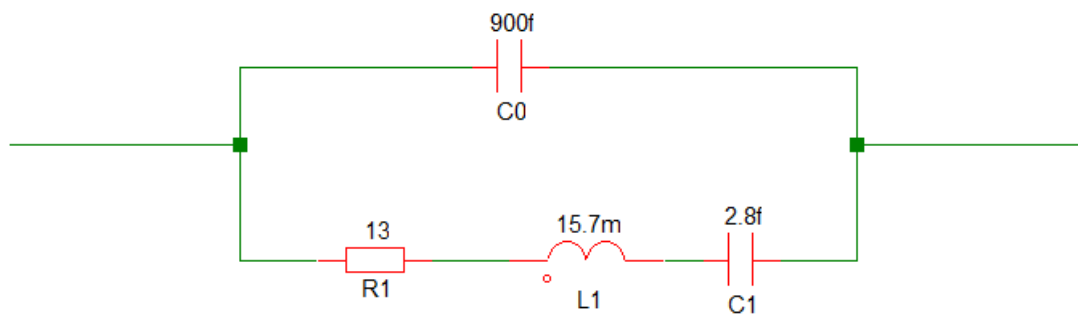
Size Reduction in AT cut crystals

Case	Size mm	Year of introduction	Picture
HC49	11.05 x 4.65 x 13.46	Early 1980s	
UM1	7.8 x 3.2 x 8.0	Mid 1980s	
GSX49-4	12.9 x 4.8 x 4.3	1993	
GSX-751	7.2 x 5.2 x 1.3	2000	
GSX-532	5.2 x 3.4 x 1.3	2001	
GSX-433	4.1 x 2.6 x 0.8	2003	
GSX-333	3.3 x 2.6 x 0.7	2004	
GSX-323	2.6 x 2.1 x 0.6	2005	
GSX-221	2.1 x 1.7 x 0.6	2008	
GSX-213	1.65 x 1.25 x 0.35	2012	

Size Reduction in Tuning Forks

Case	Size mm		Picture
GWX-26	2.1 x 6.2	Traditional	
CM8V	2.0 x 1.2 x 0.6	2010	
	1.6 x 1.0 x 0.38	In development	

The Crystal Electrical Model



24MHz GSX-333

This model ignores overtone and spurious resonances. Non-linear effects are also not modelled. The motional resistance (R1) is sometimes referred to as RR. This is not the same as ESR (Effective Series Resistance).

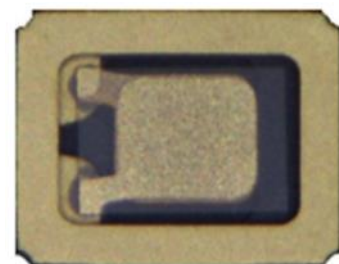
$$ESR = R1 * \left(1 + \frac{C0}{C1}\right)^2$$

C1 is the load capacitance in a parallel resonant mode application

Effects of Shrinking the Crystal



From HC49 to GSX-213



Reduced C0

The thickness of the quartz is set by the frequency (a 26MHz AT cut fundamental is 64µm thick), so that does not change. The other dimensions of the quartz crystal have to be shrunk to fit the package. This results in smaller electrodes. C0 is proportional to electrode area. An approximate equation is given below. This ignores the effects of fringing and package parasitic capacitance.

$$C0 = A * Ff * 0.026$$

C0 is in pF, A is the electrode area in mm², Ff is the fundamental resonance in MHz

Reduced Motional Capacitance (C1)

The motional capacitance is proportional to electrode area for a given frequency. An approximate expression is given below.

$$C1 = 0.126 * A * \frac{F}{n^3}$$

C1 is in fF, A is the electrode area in mm², F is the resonant frequency in MHz, n is the overtone.

Trim Sensitivity (Ts)

$$Ts = \frac{C1}{2(C0 + C1)^2}$$

C1 is the load capacitance

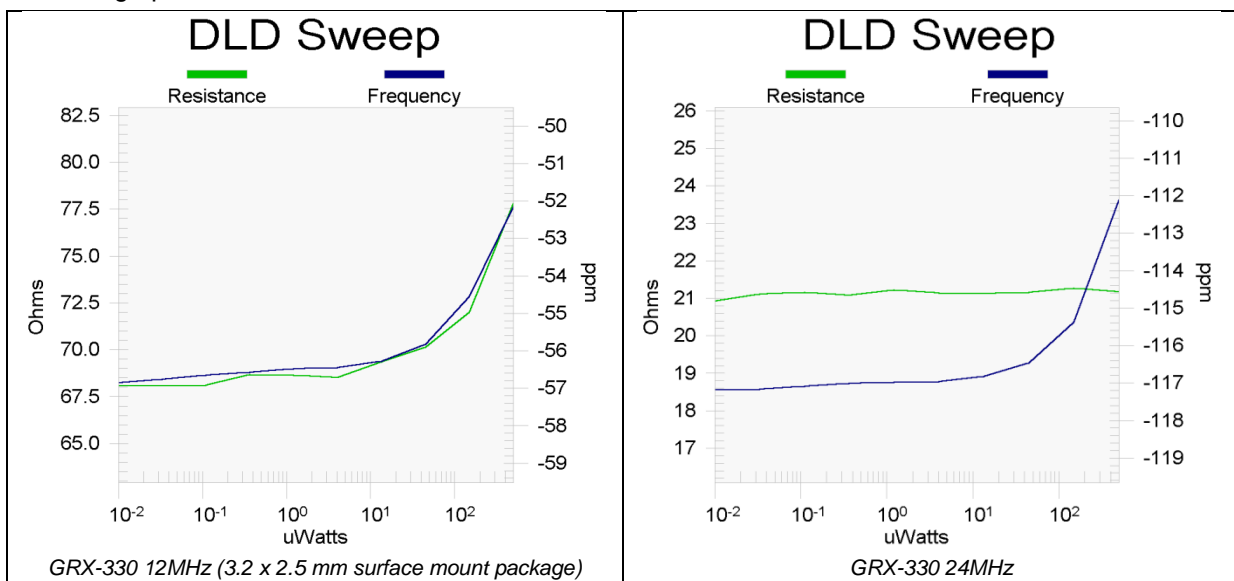
C1 is reduced by changing to a smaller crystal. In parallel resonant applications $C0 \ll C1$. Therefore Ts is reduced if the application circuit is not adjusted when changing to a smaller crystal.

Motional Resistance (R1)

For a given crystal Q and series resonant frequency R1 is inversely proportional to the active area of the crystal. The active area is about the same as the electrode area. Therefore smaller crystals have a higher R1. In practice the crystal Q for small crystals is not as good as the larger ones. The reduced Q also contributes to a higher R1. If the circuit is not adjusted to accommodate the higher R1 this result could be an oscillator with start-up problems.

Drive Level Dependency (DLD)

There are many sources and types of DLD. One of particular interest when using very small crystals is a shift in the resonant frequency with changes in the drive level. This is due to nonlinear components in the quartz stiffness. More details of this mechanism can be found in ref[1]. An example can be seen in the plot below. The frequency scale on the right hand side shows the series resonance relative to the design parallel resonance. The left hand resistance scale is R1.



Here we see a frequency shift starting to increase at $\sim 20\mu\text{W}$. The effect is a function of power density so smaller crystals should be driven with a proportionally lower power.

It can also be seen that the motional resistance changes with drive power for the lower frequency crystal indicating a drop in Q if the crystal is over-driven. The shift in resonant frequency induced by drive level changes adds an AM to PM mechanism that degrades the phase noise performance of the oscillator. The reduced Q also degrades phase noise performance. It is therefore important for optimum phase noise and frequency accuracy performance to avoid overdriving the crystal.

Increased Minimum Frequency

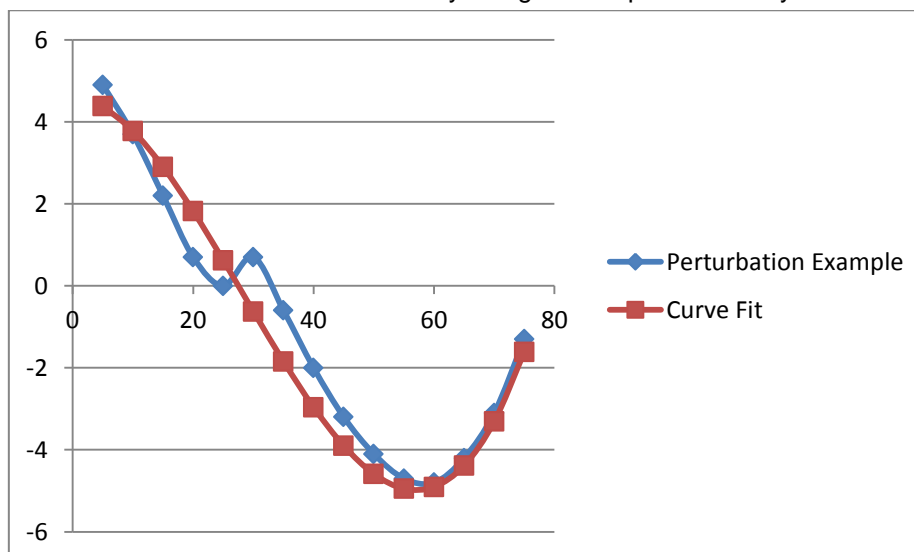
The minimum usable frequency for an AT cut crystal of given size is set by the presence of alternative modes of resonance (and their overtones) that interfere with the wanted mode. The alternative modes of resonance can show up as spurious resonances. They can also manifest as "activity dips". Activity dips are increases in R1 that appear over a narrow temperature range. See ref[2] for more on activity dips. This source also warns of increased coupling into unwanted resonances with increased drive level.

Package	Package Size (max)	Minimum AT cut Frequency
HC49J	17.7 x 11.0 x 5.3	1.8 MHz
UM-1J	11.6 x 7.8 x 3.6	3.579 MHz
GSX-751	7.2 x 5.2 x 1.3	6 MHz
GSX-533	5.2 x 3.4 x 1.3	8 MHz
GSX-331	3.3 x 2.6 x 0.7	10 MHz
GSX-321	2.6 x 2.1 x 0.6	12 MHz
GSX-221	2.1 x 1.7 x 0.6	16 MHz
GSX-213	1.65 x 1.25 x 0.35	26 MHz

Lower frequencies are available in these small packages by using different crystal cut types that use a different resonant mode. This often comes at the expense of poorer frequency stability. The SL cut is an example that uses a face shear vibration mode. The exception is the GT cut crystals which claim lower frequency performance with a stability similar to that of an AT cut crystal. The R1 quoted for the GT cut is very high though.

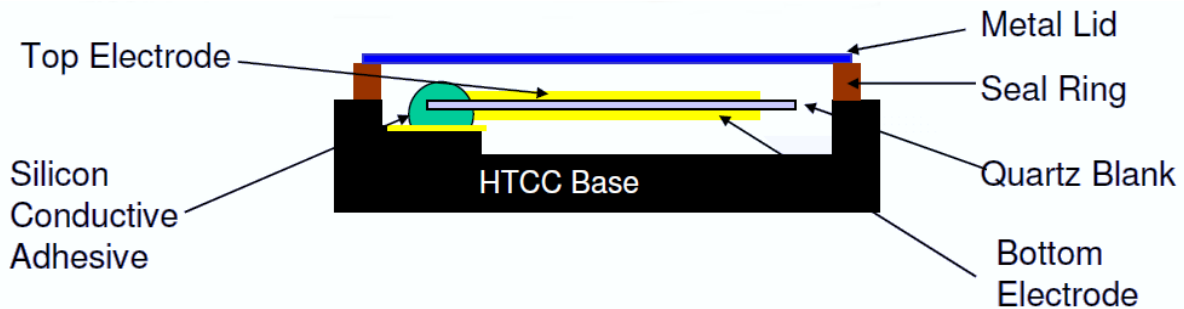
Perturbations

This is a term used to describe a deviation from the ideal frequency V temperature characteristic of the particular crystal cut. These can be caused by the coupling of unwanted modes of resonance as described above. Perturbations can be induced by using a drive power density that is too high.



The measured data in this plot is marked in blue. The red line is the attempt to fit a third order polynomial to the data. For a crystal without perturbations the match between polynomial and measured data should be better than 0.5ppm for all points. A third order polynomial will usually suffice for an AT cut crystal.

Package Asymmetry



The move from leaded cans to the modern ceramic surface mount packages means that the stray capacitance between crystal electrodes and package ground is asymmetric. This can lead to small variations in the frequency of an oscillator depending on which way round the crystal is mounted. Care should be taken, particularly when prototyping, that the correct package orientation is used. Note that crystals are characterised with the can (or lid for surface mount types) floating unless stated otherwise. This can also lead to unexpected frequency shifts.

Vibration Resistance

The lower mass of the small surface mount parts is of a benefit when it comes to protection from damage by shock and vibration. The traditional circular crystal blank required three or four point mounting in large packages taking up a large PCB area to avoid damage by vibration or shock. In modern surface mount packages the blank is normally secured by two blobs of silver loaded epoxy that also perform the electrical connection the crystal. Automotive grade surface mount parts have what is referred to as a four point mount of the blank within the package. This consists of two extra blobs of silver loaded epoxy placed on top of the first two after the crystal blank has been placed. The advantage here is that the increased mount rigidity comes without costing any more PCB area. Although this is referred to as four point, the quartz is still only attached by two corners. A 5 point mount, attached at three corners, is available for applications requiring an extremely rugged crystal.

Design Changes to Accommodate Smaller Crystals

Reduce Load Capacitance

Reducing the load capacitance has the advantage of maintaining the tuning range of the oscillator. It can also reduce the drive level to the crystal and power consumption of the oscillator circuit. Fortunately the reduction of crystal package size leads to a smaller PCB pad size and therefore lower PCB pad capacitance.

Reduce Drive Level

The drive levels quoted in data sheets are those used for characteristic testing. They may not be the optimum for that part. Characterisation of the crystal should be performed (or ask the supplier for the data) to find the optimum drive level.

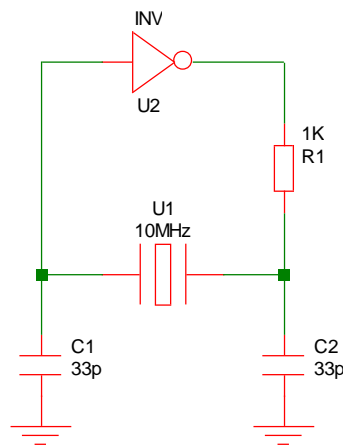
How to determine drive level

Drive level can be determined through simulation of the oscillator with the maximum expected value of R1 used in the crystal model. If a realistic model of the behaviour of the active section of the oscillator is not available then the current in the crystal should be measured using a high bandwidth current probe. If you don't have a current probe then measuring voltage across the crystal can give enough data to derive the crystal drive level. When measuring voltages in this way, care must be

taken to avoid loading the circuit with the probe. Ideally the shunt capacitors should be temporarily reduced to compensate for the probe capacitance.

Reducing drive level with a resistor

If you don't have the ability to change the active part of the oscillator then a series resistor between the amplifier output and resonator input can reduce the drive level to the crystal. Reduction in the output level of the resonator circuit as the series resistance is increased can be offset by the use of asymmetric load capacitors.



Asymmetric Load Capacitors

The load capacitor at the output side of the resonator circuit (C1 in the circuit above) can be as little as half the load capacitor at the input side (C2 in the circuit above). This is a good option when the active part of the oscillator has AGC (Automatic Gain Control) setting the drive level. The result of the asymmetry is a step-up of the output voltage from the resonator.

Higher Operating Frequency

Where there is design flexibility, for instance in a synthesizer where the reference division ratio is programmable, an oscillator frequency should be chosen that is high enough to allow the use of the smallest package size.

References

[1] Drive level dependency in quartz resonators. Mihir S Patela, Yook-Kong Yonga, Masako Tanaka
<http://www.sciencedirect.com/science/article/pii/S0020768309000055>

[2] Activity Dips In Standard Oscillator. Laurent Toudret, Laurence Cosqueric, Bernard Sanctorum, Nicolas Gufflet

<https://escies.org/download/webDocumentFile?id=60979>

Author Information

Chris Watts is Chief engineer at Golledge Electronics. He has over 30 years of design experience as a RF engineer and Radio Systems engineer. His main field of work has been licence free radio in the sub 1GHz bands. Previously he was an independent consultant for Bayford Systems, and Systems Engineer for Zarlink Semiconductor (now Microsemi).